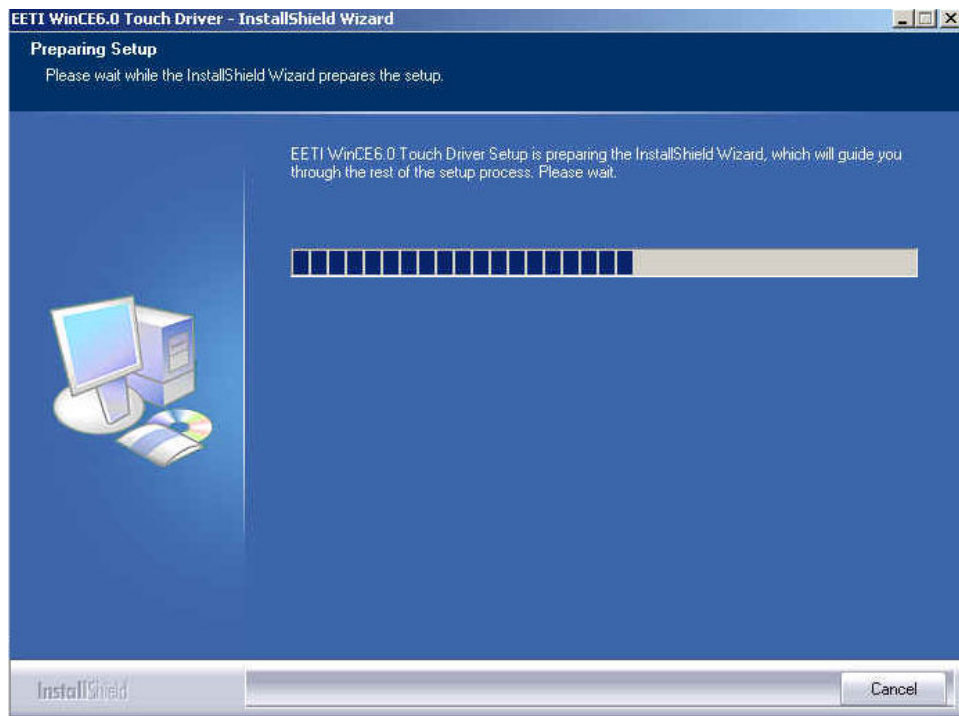


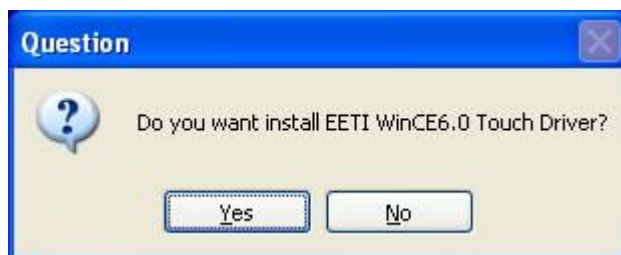
EETI WinCE Touch Driver Installation Guide

Operation System: Windows CE .6.0

1. Execute setup.exe, you will see the installation window.

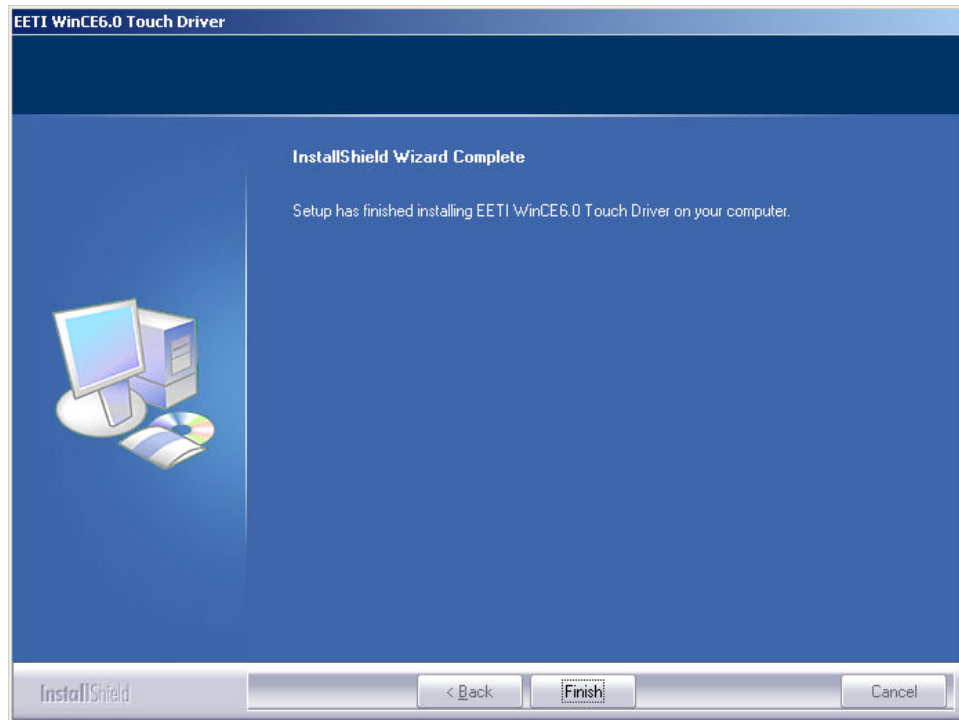


2. Select Yes to continue the installation, or select No to cancel it.



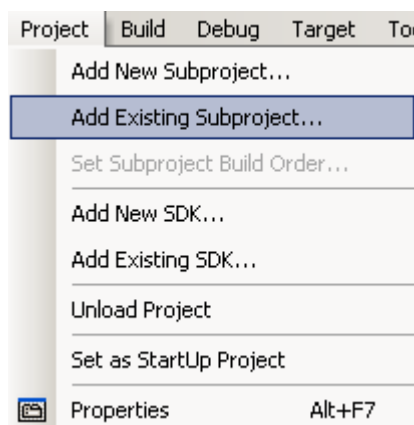
EETI WinCE Touch Driver Installation Guide

- When installation successfully finish, you will see the window. Click Finish to close the installation window.

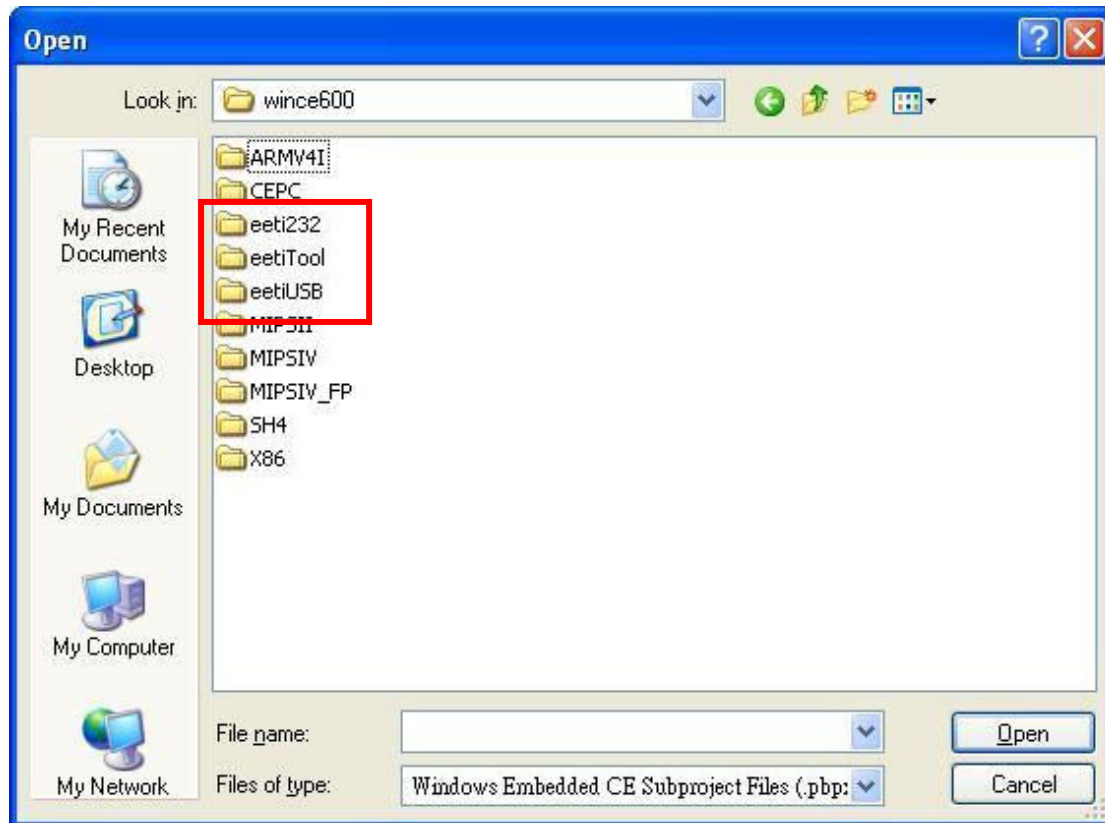


- Launch Visual Studio 2005 with Platform Builder WinCE6.0. Open your OSDesign which you want to install EETI Touch Driver.

- Select Project → Add Existing Subproject



6. Switch the folder to C:\EETICEDB\wince600



7. To add subprojects into your OSDesign, Choose the pbpxml file under different folder. (i.e. eeti232, eetiTool and eetiUSB)

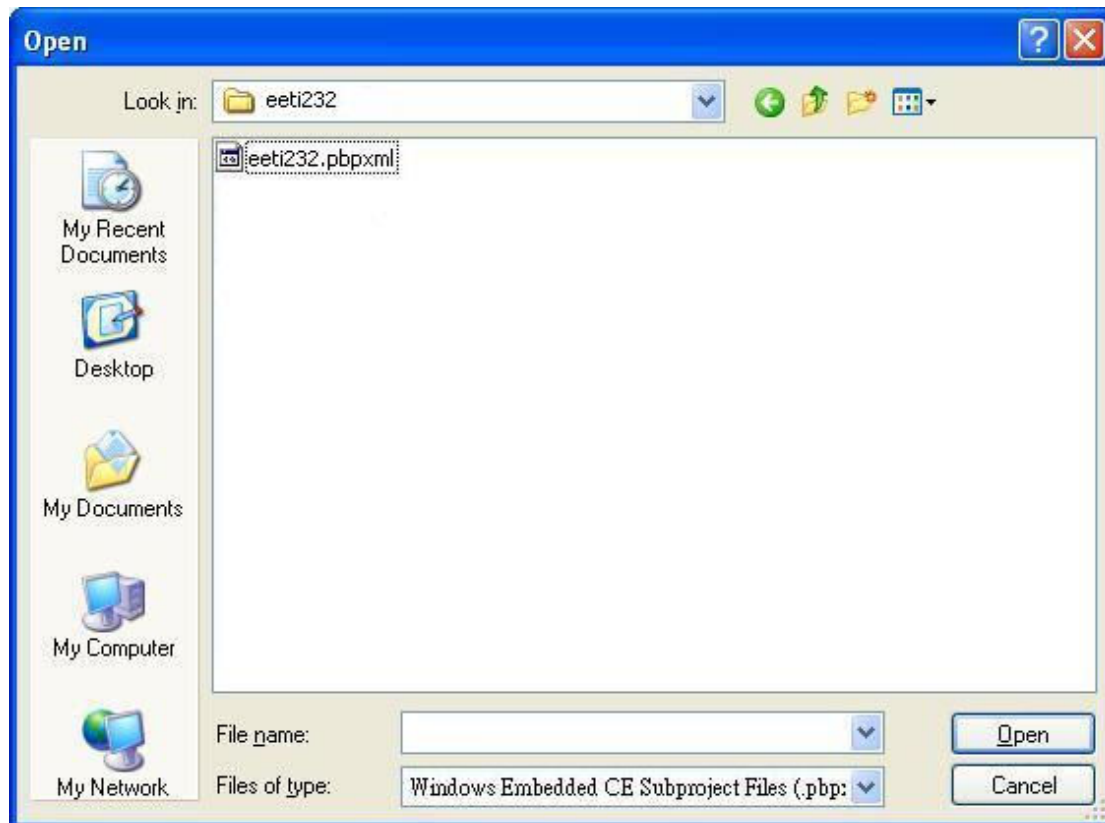
[For USB Controller]

Add **eeti Tool** and **eeti USB** subprojects into your OSDesign

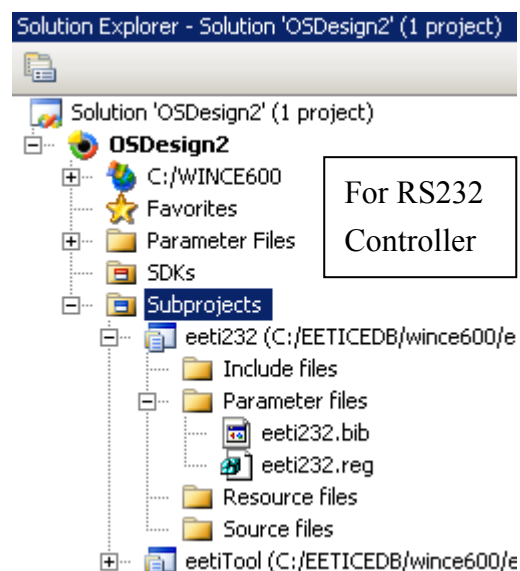
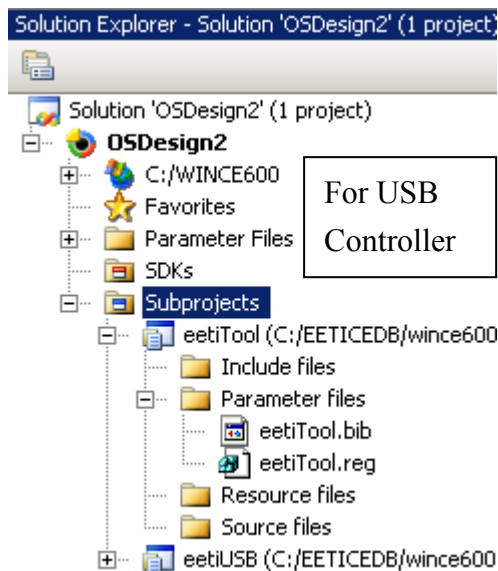
[For RS232 Controller]

Add **eeti Tool** and **eeti 232** subprojects into your OSDesign

EETI WinCE Touch Driver Installation Guide



8. After you add catalog items, you will find the subprojects inside your OSDesign.



9. Select Build → Make Run-Time Image to make the new image.

Notes:

1. [For USB Controller] Select the UHCI or OHCI USB Host Controller driver into your platform which supported by the target device. Check the USB mouse can go



禾瑞亞科技股份有限公司
eGalax_eMPIA Technology Inc.

EETI WinCE Touch Driver Installation Guide

well at the same port. Select the "Mouse" into your platform. This can be found in:Catalog Item Window, add “Core OS\CEBASE\Shell and User Interface\User Interface\Mouse”

2. [For RS232 Controller] Select the COM port which touch device is using, please modify eeti232.reg
[HKEY_LOCAL_MACHINE\Drivers\BuiltIn\TouchKit1]
"Dll"="TouchKit.dll"
"Order"=dword:FF
"Prefix"="TKT"
"Index"=dword:00000001
"Context"=dword:1; → This is the COM Port setting.
3. You can uninstall the catalog items in platform builder by execute setup.exe again.
4. Note: If you wish to disable right button simulation, please do the following
4-1: Modify eetiTool.reg: set RBSIZE = 0
4-2: Remove AYGShell component in your OS Design. It locates under: Core OS
-> CEBASE -> Shell and User Interface -> Shell -> AYGShell API Set



禾瑞亞科技股份有限公司
eGalax_eMPIA Technology Inc.

EETI WinCE Touch Driver Installation Guide

Driver Registry Settings:

Settings for eetiTool.reg:

[HKEY_LOCAL_MACHINE\Drivers\TouchKit]

| Registry Key | Type | Description |
|-----------------|-------|--|
| RBEnable | dword | Enable auto-right click button function of the touch driver. RBSIZE = 0 can disable auto right button RBSIZE = 1 can enable auto right button |
| RBSIZE | dword | set scale that will be treated as the same point, $\text{x-coordinate regin(pixel)} = (\text{RBSIZE} / 65535) * \text{x-coordinate resolution}$ |
| RBTIME | dword | set how long the same point pressed will treated as right button. The unit is 10^{-7} second. |
| FLAGS | dword | set 0x1 software filter enable set 0x3000 update EEPROM function enable set 0x100 to enable the check rotation function set 0x200 to enable rotate touch point data. Then user can set "FixedRotateInfo". Please do not set enable the "check rotation function" at the same time. |
| FixedRotateInfo | dword | You must set "FLAGS" to enable rotate touch point data first. 0 : not rotate 1 : rotate to 90 degree 2: rotate to 180 degree 3 : rotate to 270 degree |
| SoundType | dword | SoundType = 0 is no sound SoundType = 1 is Beep in touch down. SoundType = 2 is Beep in lift off. |
| EdgeCompEn | dword | Edge compensation enable |
| EdgeCompUp | dword | Edge compensation upper bound parameter |
| EdgeCompDown | dword | Edge compensation lower bound parameter |
| EdgeCompLeft | dword | Edge compensation left bound parameter |
| EdgeCompRight | dword | Edge compensation right bound parameter |
| HalfVGA | dword | Touch mapping to screen parameter: HalfVGA=1: touch only on upper half of screen HalfVGA=2: touch only on lower half of screen |



禾瑞亞科技股份有限公司
eGalax_eMPIA Technology Inc.

EETI WinCE Touch Driver Installation Guide

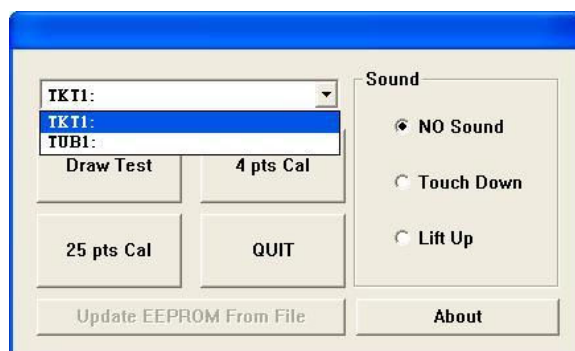
| | | |
|------|-------|--|
| | | HalfVGA=3: touch only on right half of screen HalfVGA=4: touch only on left half of screen |
| Baud | dword | RS232 baud rate setting: Baud = 1C200 for 115200 Baud = E100 for 57600 Baud = 2580 for 9600 |

EETI Touch Utility User Manual

The main utility of EETI touch driver is called eGalaxTouch.exe.

Users can launch the utility by following step:

1. Start Menu → Run
2. Type eGalaxTouch and select OK
3. The eGalaxTouch utility is showed as belows



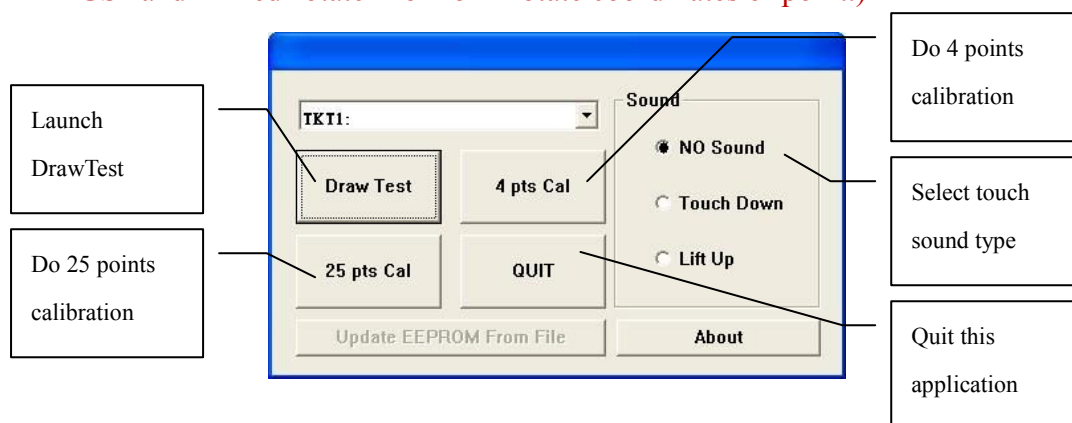
If you are using RS232 interface touch controller, please select TKT1:

If you are using USB interface touch controller, please select TUB1:

The description of eGalaxTouch buttons:

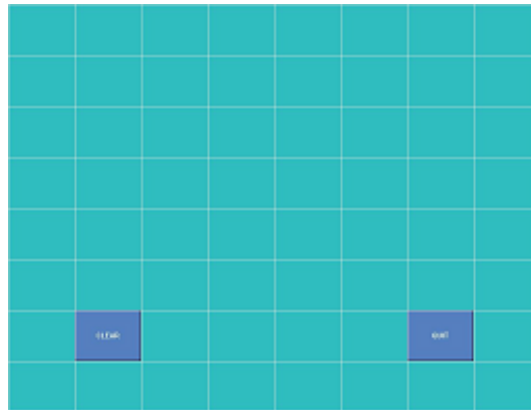
(for support PCAP version driver. The tool does not support 4 Pts Cal and 25 pts cal.

If you have monitor rotation issue for PCAP device , you can modify the parameters “FLAGS” and “FixedRotateInfo” for rotate coordinates of point.)

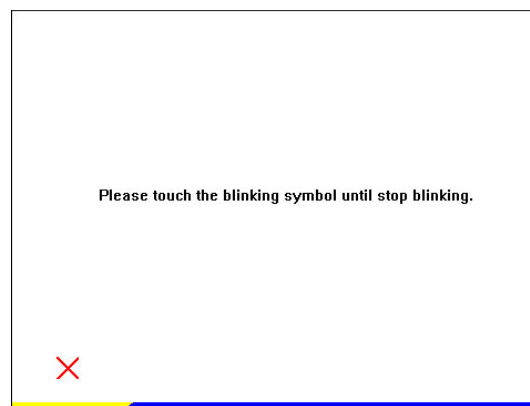


The DrawTest application is an application to let user to do drawing test.

EETI WinCE Touch Driver Installation Guide



The 4 / 25 points calibration utility is used to do calibration, users needs to touch the cross points continuously until the cross stop blinking.



If developers need to launch drawtest or calibration utility without eGalaxTouch utility, please passing the parameters according to following information:
Note that the application Calbration.exe without “i”.

For RS232 interface:

Drawtest.exe “TKT1:”
Calbration.exe “TKT1: P4”
Calbration.exe “TKT1: P9”
Calbration.exe “TKT1: P25”

For USB interface:

Drawtest.exe “TUB1:”
Calbration.exe “TUB1: P4”
Calbration.exe “TUB1: P9”
Calbration.exe “TUB1: P25”



禾瑞亞科技股份有限公司
eGalax_eMPIA Technology Inc.

EETI WinCE Touch Driver Installation Guide

Developers can use ShellExecuteEx API and passing corresponding parameter to achieve the feature.